



**YNSA**

Yamamoto New Scalp Acupuncture

since 1973

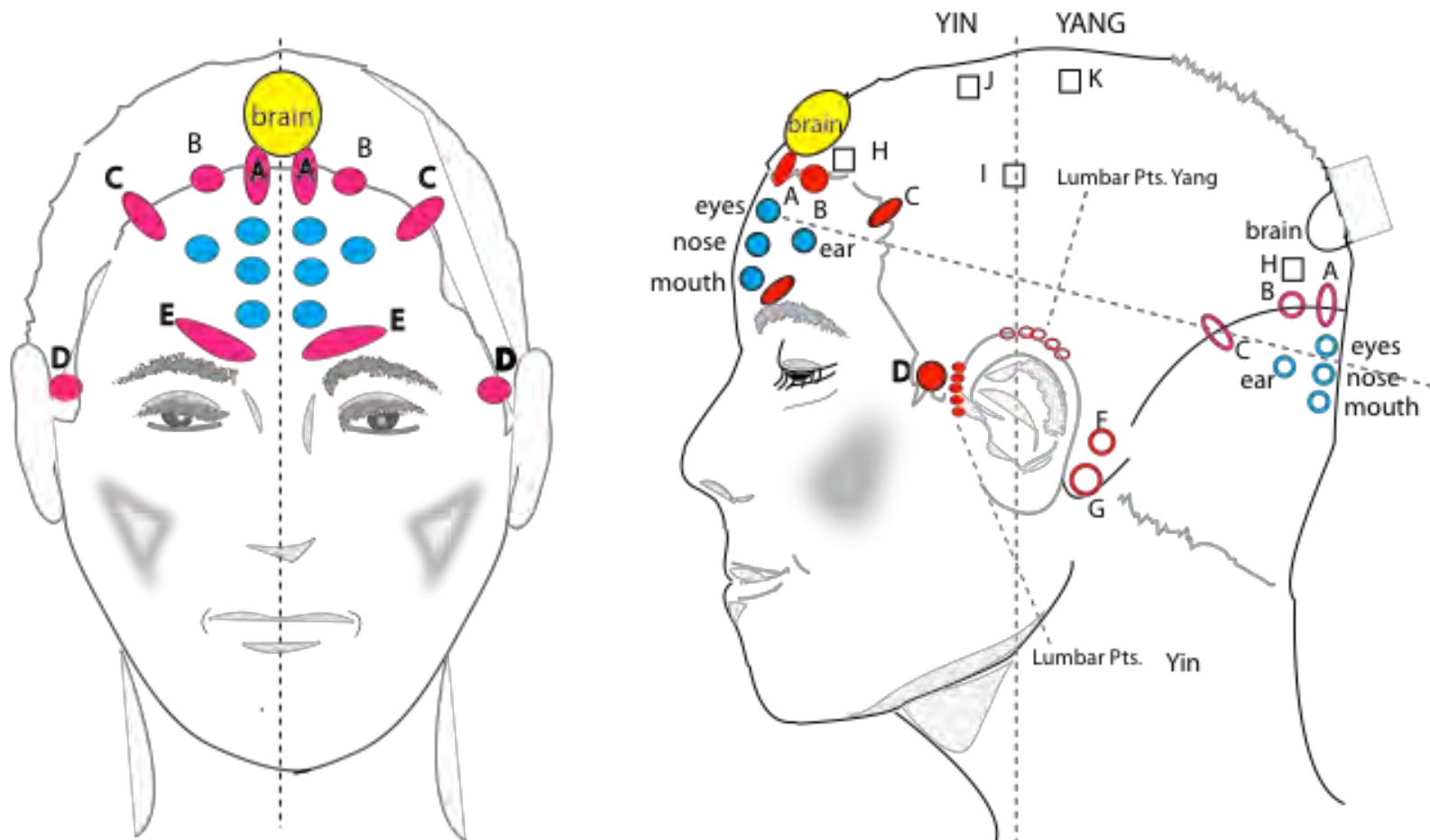
## YNSA Seminar



Toshikatsu Yamamoto MD, Ph.D. Yamamoto Rehabilitation Clinic Miyasaki-Kaida, 4514-1, 889-2161 Japan

FAX: (+ 81) 985-65-2637

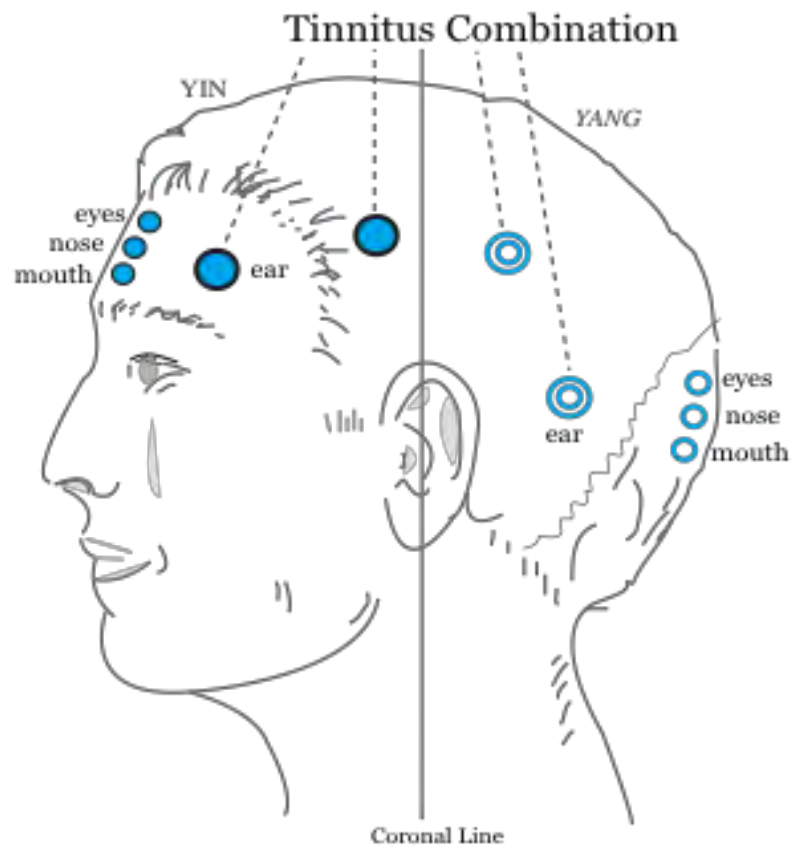
e-mail: [thcmkyet@gmail.com](mailto:thcmkyet@gmail.com)



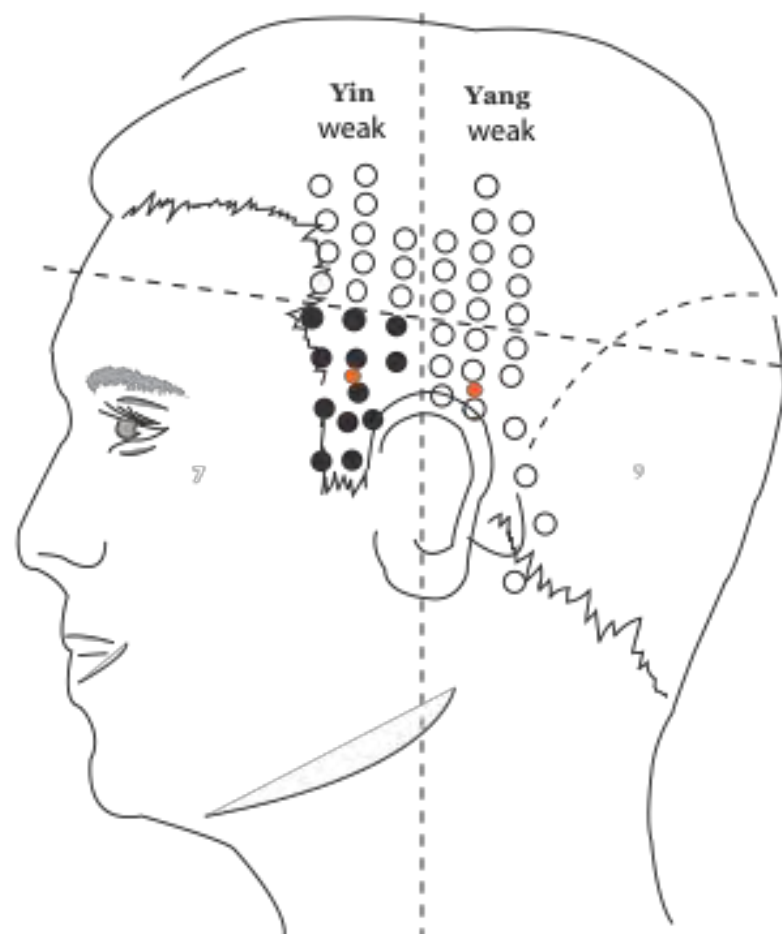
The 2 drawings on this Page show the YNSA Basic Points (red), YNSA Sensory Points ( blue) and YNSA Brain Point (yellow) in the frontal YIN and occipital YANG position.

Basic A = Neck  
 B = shoulder  
 C = shoulder , arm , hand  
 D = lumbar region

Basic Pt. E = chest  
 F = ischialgia  
 G = knee

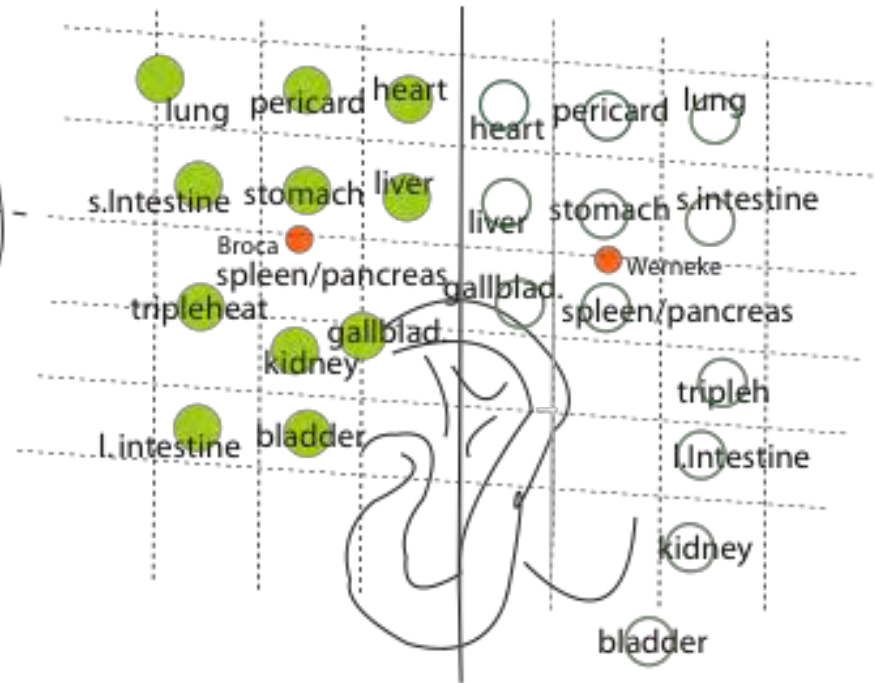


These Tinnitus Points, as the Name suggests, are to treat Tinnitus. It is best, to start treatment with the Yang Ear Point and continue with the other Points in order.

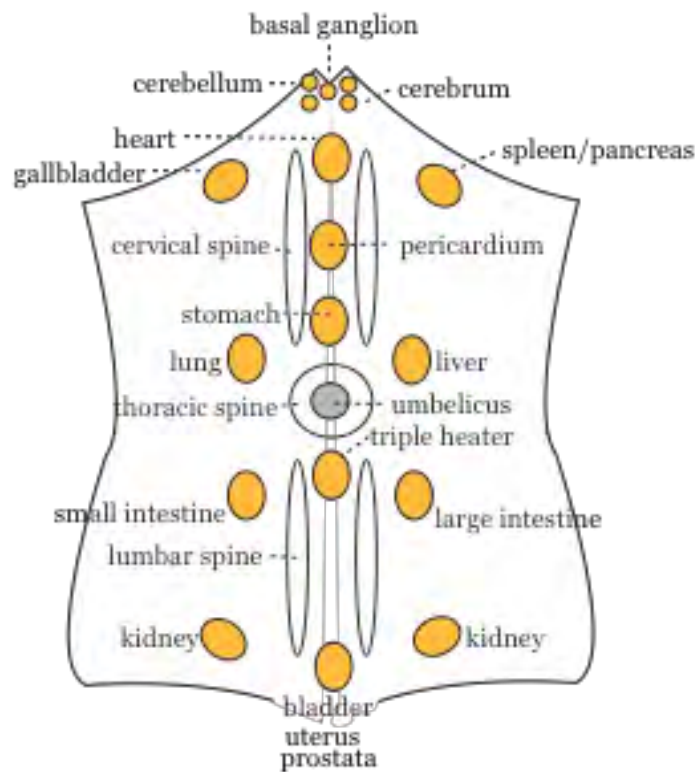


**YNSA: Y-Points**

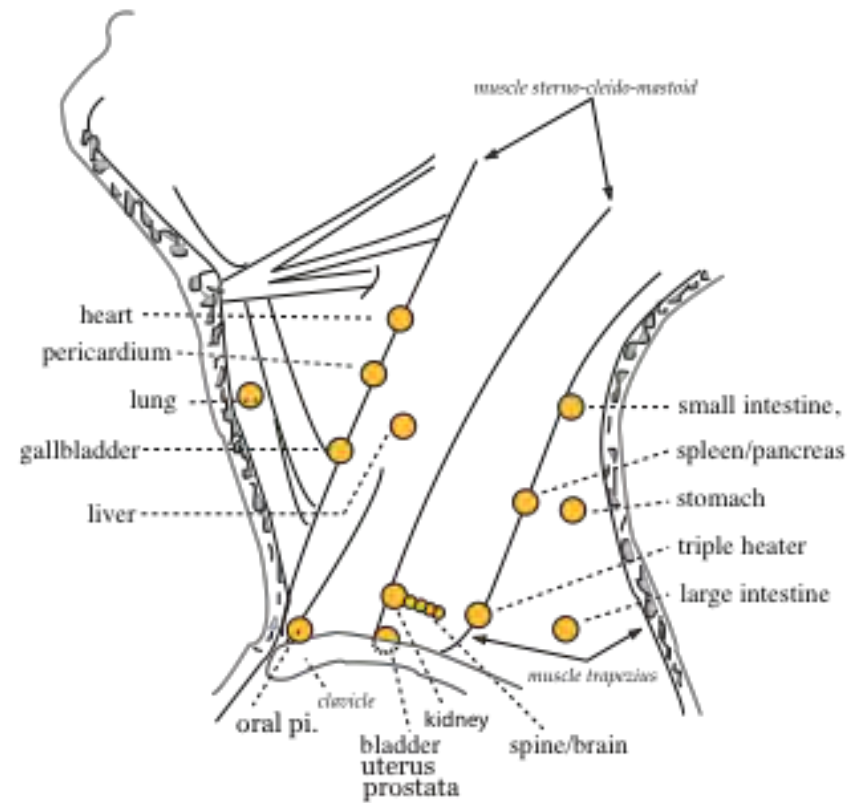
lung, pericard, heart,  
 s.intestine, stomach, liver,  
 triple heater, spleen pancreas, gallbladder,  
 kidney, l.Intestine, bladder,



YNSA Y- Points represent internal organs and are used to treat such or, if indicated by abdominal or neck diagnosis to do so.

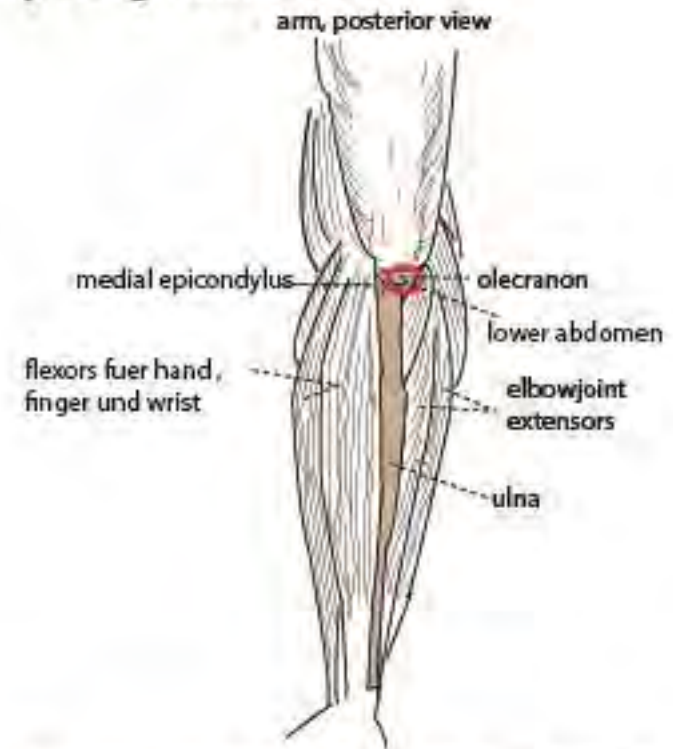
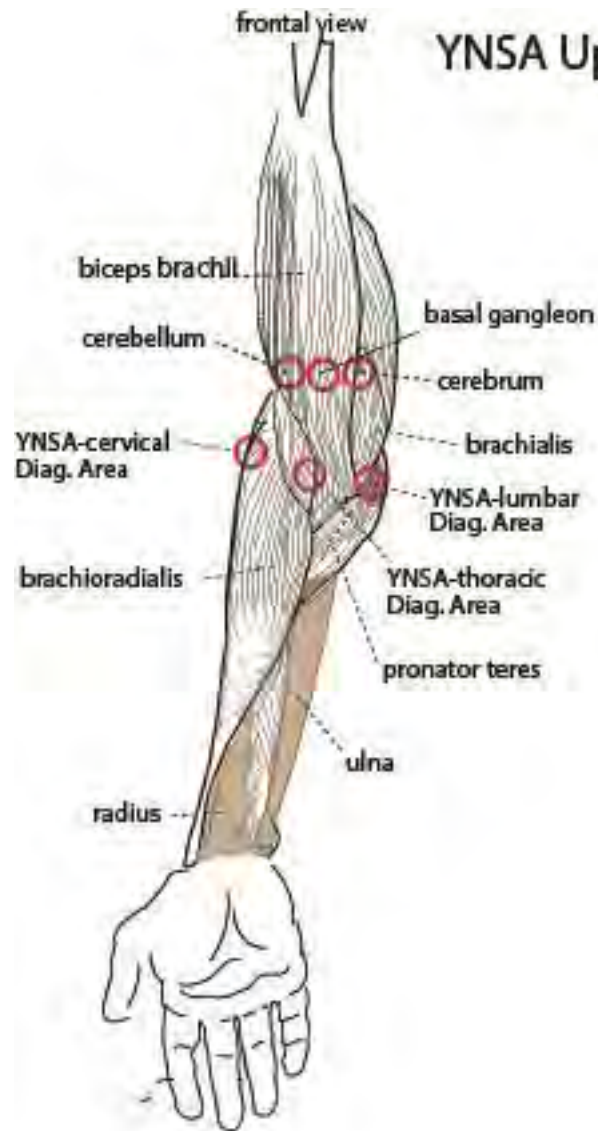


**YNSA modified abdominal diagnosis**



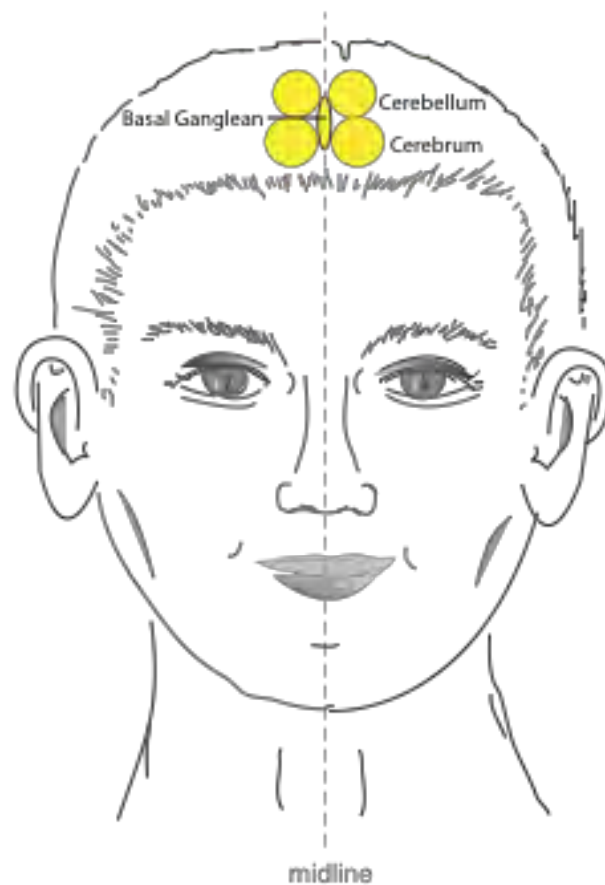
**YNSA Neck-Diagnosis**

## YNSA Upper extremity Diagnostic Areas



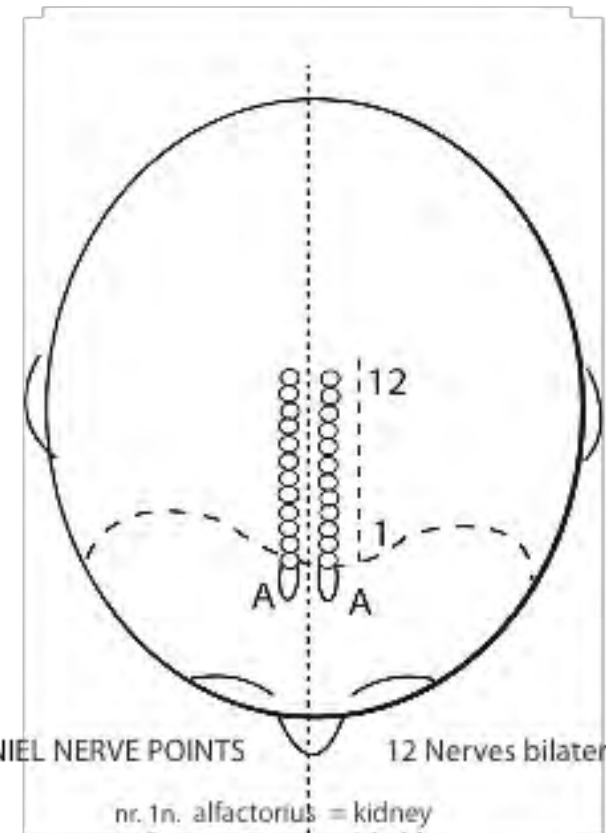
### YNSA Diagnostic and Treatment-Point for lower abdomen

This Point is situated slightly lateral to the olecranon. It has to be palpated and can be used for diagnostic and recheck purpose, as well as treatment. Very useful for treatment on these Points, are semipermanent needles. Indication : lower abdominal pain and disorders.



### YNSA BRAIN POINTS

These Points are usually used to treat Neurological disorders, chronic conditions of pain and when indicated by YNSA Diagnostic Points

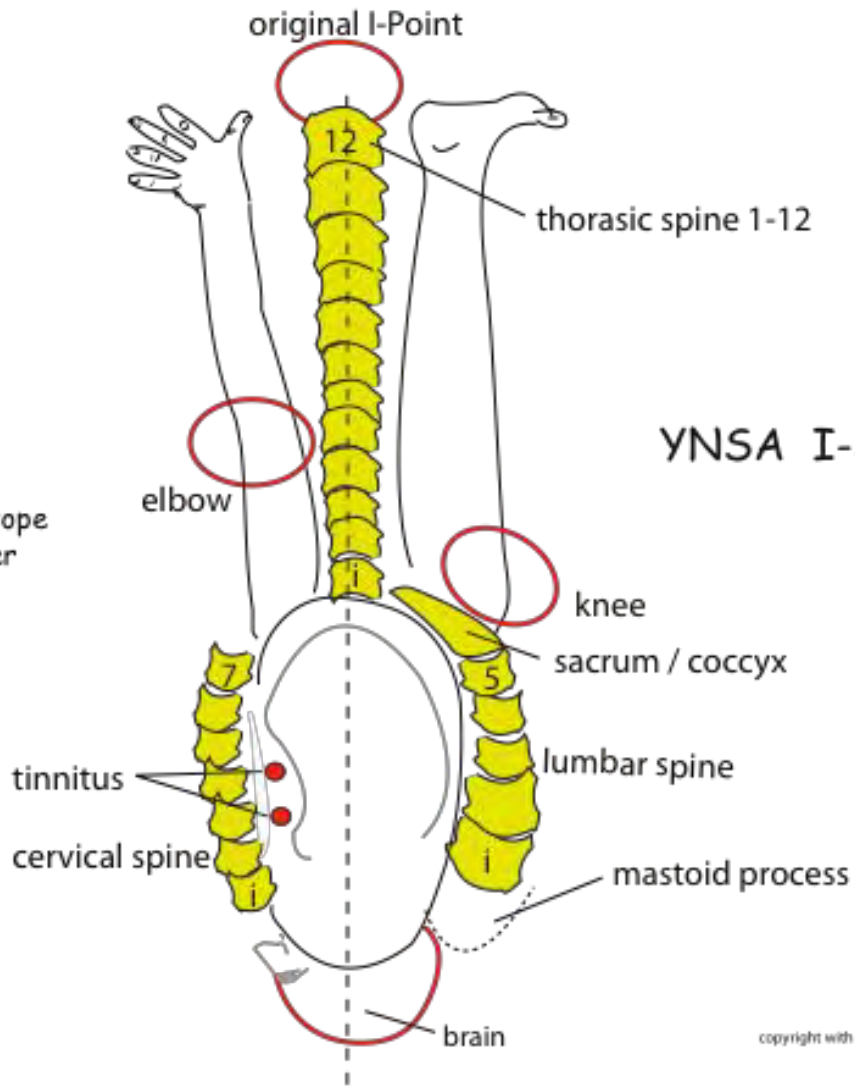


### YNSA CRANIAL NERVE POINTS

12 Nerves bilateral

- nr. 1n. olfactorius = kidney
- nr. 2n. opticus = bladder
- nr. 3n. oculomotorius = pericard
- nr. 4n. trochlearis = heart
- nr. 5n. trigeminal = stomach
- nr. 6n. abducens = tripleheater
- nr. 7n. facialis = small intestine
- nr. 8 n. auditory = milz /pancreas
- nr. 9n. glossopharyngeus = lung
- nr. 10n. vagus = liver
- nr. 11n. accessories = gallbladder
- nr. 12n. Hypoglossus = large intestine

The latest Somatotope  
 A very powerful Somatotope  
 developed from the earlier  
 YNSA BASIC I-POINT



YNSA I-SOMATOTOPE



